

# **Wilch**

## **OPERATORS MANUAL**

**MODEL  
W1621**

**Wilch Manufacturing, Inc.  
1345 S.W. 42nd Street  
Topeka, KS 66609  
Phone (913) 267-2762  
Fax (913) 267-6825**

## SECTION 1

### INSTALLATION INSTRUCTIONS

#### 1.1 SHIPMENT & TRANSIT

The freezer has been operated and tested at the factory. Upon arrival the complete freezer must be thoroughly checked for any damage which may have occurred in transit. *NOTE: A Tip (N) Tell warning device is placed on each shipping carton at the factory. If the arrow is blue, the carton has been tipped in transit* (See Fig. 1)

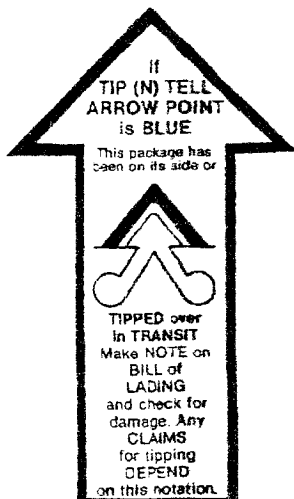


Fig. 1

**THE CARRIER IS RESPONSIBLE FOR ALL DAMAGE IN TRANSIT. WHETHER VISIBLE OR CONCEALED. DO NOT PAY THE FREIGHT BILL** until the freezer has been checked for damage. Have the carrier note any visible damage on the freight bill. If concealed damage and/or shortage is found later, advise the carrier within 10 days and request inspection. The customer must place any claim for damage and/or shortage with the carrier. Wilch cannot make any claims against the carrier.

#### 1.2 INSTALLATION OF FREEZER

A. Place freezer in a location that allows adequate space at the back and each side for proper air circulation. Minimum clearance is 4" (10 cm) at the rear and 6" (15 cm) on both sides.



### CAUTION

***Failure to allow adequate ventilation will void the warranty!***

B. Connect the power cord to a properly grounded DEDICATED 20 Amp circuit.



### CAUTION

***Do not alter or deform the plug in any way!***

## SECTION 2

### INITIAL SET-UP AND OPERATION AND OPERATOR'S SAFETY PRECAUTIONS

- A. Read and understand the operating instructions in this manual thoroughly.
- B. Note all warning labels on the freezer.
- C. Do not wear loose fitting garments or jewelry which could cause a serious accident.
- D. Stay alert at all times during operation.
- E. Keep operating area clean.
- F. Do not operate freezer if any excessive noise or vibration occurs. Contact your Wilch service agent.



### WARNING

***Disconnect power for maintenance. Do not attempt to perform maintenance on the freezer until electrical power has been disconnected.***

## SECTION 3

### DISASSEMBLY, CLEANING, SANITIZING AND START-UP PROCEDURE

#### 3.1 DISASSEMBLY

A. Lift off the syrup rack. (See Fig. 2).

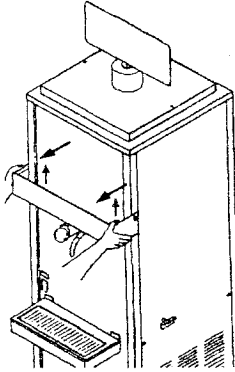


Fig. 2

B. Lift up the drip tray to remove it (See Fig 3).

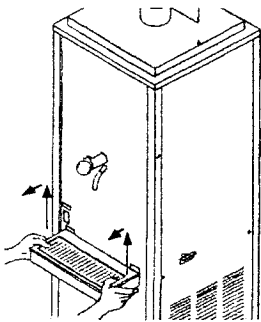


Fig. 3

C. Completely drain the product out of the freezer. Use the outlet located below the drip tray. The handle that controls this outlet is located on the right side of the freezer. Turn the handle counter-clockwise to open (See Fig 4).

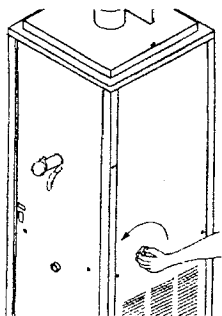


Fig. 4

E. Remove the cover (See Fig 5).

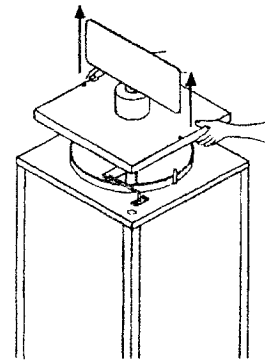


Fig. 5

D. Remove Retaining Knob and lift out the agitator assembly (See Fig. 6).

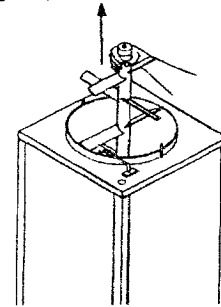


Fig. 6

E. Remove the drive coupling located at the top of the agitator assembly. This is accomplished by rotating the coupling counter-clockwise and lifting it off ( See Fig. 7).

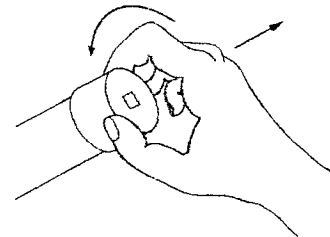


Fig. 7

F. Slide the plastic bearing out of the bottom of the agitator assembly ( See Fig. 8).

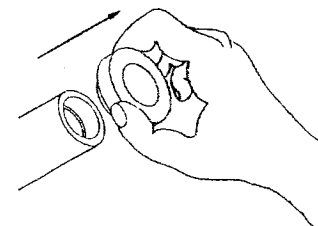


Fig. 8

G. Remove the plastic scraper blades in the following sequence, (See Fig. 9):

- a. Tip the blade out away from the agitator center shaft.
- b. Lift the blade and disengage it from the top connection.
- c. Lower the blade to remove it.

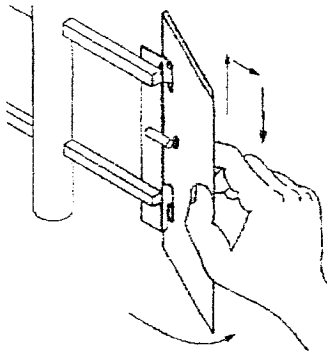


Fig. 9

H. Remove the clip holding the dispensing valve plunger and slide out the plunger assembly.

I. Remove the "O" Rings from the plunger.

J. Unscrew the plunger knob and disassemble.

### 3.2 CLEANING PROCEDURE

NOTE: Each time the freezer is disassembled, all internal freezer components must be thoroughly washed, scoured and sanitized using procedures recommended by your local health department. In lieu of local health department recommendations, use a three compartment sink; one compartment to wash parts in detergent, one compartment to rinse, and one to sanitize.

A. If the freezer is fully assembled and empty of product, proceed to Paragraph B, below. If the freezer is full of product use the procedure outlined in Section 3.1 to disassemble the freezer.

B. Thoroughly scour all of the parts removed from

the freezer in a mild detergent solution.

C. Rinse each part with clean water.

D. Dip each part in sanitizing solution.

E. Place each part on clean paper toweling and allow it to air dry.

### 3.3 REASSEMBLY AND SANITIZING

A. Reassemble the freezer in reverse order.

B. Prepare a minimum of 5 gallons (20 liters) of sanitizing solution (Divorsol CX or equivalent) following the manufacturer's instructions using 120 degree Fahrenheit water (50 degrees Centigrade). Pour this solution into the freezer.

C. Use the brush to sanitize the inner freezing cylinder walls. Turn freezer panel switch to "CLEAN" for 5 minutes. Empty the sanitizer from freezer using the lower drain valve.

D. Dispose of the used sanitizing solution.

E. Mix new product according to the manufacturer's instructions and pour it into the freezer.

F. Turn front panel switch to "ON" and allow the product to freeze down to proper consistency.

## SECTION 4

### OPERATION

This freezer is designed specifically to serve a semi-frozen liquid drink. This drink can be served in assorted flavors or batch frozen as a single flavor.

The frozen product starts as either a flavored or unflavored liquid composed principally of water, sweetener and, in some cases, citric acid. Unflavored NEUTRAL BASE and batch mixed product is frozen until it achieves an approximate ratio of 70% frozen and 30% liquid.

Batch mixed product is served right out of the

freezer. Neutral based product is mixed with the customers choice of flavor. The desired flavor is pumped into a cup from a flavor bottle before the neutral base is dispensed into the cup. The swirling action of the dispensed semi-frozen neutral base blends the flavoring into the neutral base. The finished drink has the appearance and texture of apple-sauce and is refreshing and tasty.

When using neutral base and flavors, it is recommended that they both be obtained from the same manufacturer. The reason for this is that the citric acid used to enhance the taste is placed in the neutral base by some manufacturers and in the flavors by others. Using a neutral base from one source that does not contain citric acid and flavors from another source that does not contain citric acid can result in a bland tasting slush drink.

The freezing characteristics of product is affected by the ratio of sweetener and water. If the amount of sweetener level is too low, the product will freeze too hard to be dispensed from the freezer. If the sweetener level is too high, the product will not freeze properly and the finished frozen product will be thin and watery. Also, the freezer will take a longer amount of time to freeze to consistency.

The amount of sweetener in the frozen product can be measured with an instrument called a refractometer. This measurement, called BRUX, should range between 11 and 14 for proper machine operation. A product having the proper brux level will freeze down to a smooth slush consistency. The brux measurement should be taken when the product is thoroughly mixed and before it is frozen in the unit. Many problems result from improperly adding too much water when mixing neutral base. A refractometer will help you to quickly diagnose these problems.

## SECTION 5

### CONSISTENCY RE-ADJUSTMENT



#### WARNING

*The following product consistency*

*(thickness) control adjustment procedure requires removal of the right (facing the unit) side panel. Because side panel removal exposes hazardous moving parts, we suggest that this adjustment be made by a qualified service technician. Disconnect freezer from electrical power source before removing the side panel.*

From time to time, it may become necessary to readjust the consistency setting (thickness) to compensate for variation in different products. The following steps should be followed to make these adjustments:

- A. **Disconnect electrical power.**
- B. Remove right side panel.
- C. Locate consistency control adjustment screw. It is situated on the middle shelf above the drive motor.
- D. Use a screw driver to adjust warmer or colder as needed. It is suggested that small adjustments be made. NOTE: Turn clockwise to achieve a colder setting and counter clockwise to achieve a warmer setting. Use one full turn colder or warmer at a time until desired consistency is achieved (See Fig. 10).

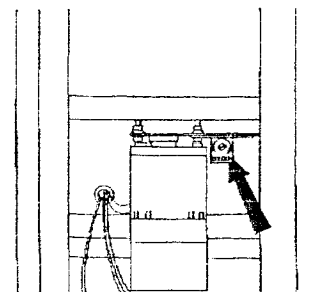


Fig. 10

**COLDER SETTING:** Allow the freezer to sense the new setting. Wait for the compressor to cycle off (10 - 15 minutes) before checking product.

**WARMER SETTING:** After making the new setting, draw off a minimum of 2 gallons (8 liters) of frozen product and add the same amount of new liquid mix. Allow the compressor to cycle off

before rechecking the product.

E. Reinstall the side panel, reconnect power.

F. Turn freezer to "ON" and allow it to freeze down.

G. Check product consistency.

## SECTION 6

### MAINTENANCE

#### 6.1 SUGGESTED WEEKLY MAINTENANCE

A. Clean, lubricate and sanitize the freezer following guidelines in Section 3.

B. Clean the exterior of the freezer using a soft wet cloth.

C. To avoid dispensing valve leakage, check valve plunger "O" Rings for cracks, cuts and wear each time freezer is cleaned.

D. When freezer is disassembled for cleaning inspect inspect the plastic bushing at the bottom of the agitator for wear an snug fit.

#### 6.2 ANNUAL MAINTENANCE



### WARNING

*Disconnect electrical power.*

A. Remove side panels.

B. Clean condenser assembly.

1. Place a wet towel over the side of condenser opposite the fan motor.

2. Use compressed air of CO<sup>2</sup> to blow out dirt from the fan side of the condenser.

NOTE: This procedure will result in a loud noise.

3. An alternate cleaning method is to use a condenser brush and a vacuum cleaner. NOTE: Loss of refrigeration efficiency will result if condenser is not kept clean. Excessive compressor run time or loss of capacity are a good indication of a dirty condenser.

C. Check the drive motor. It should pivot smoothly and easily. If the motor does not pivot easily have an authorized **Wilch** service technician remove the motor and clean and repack the pivot bearing. While the motor is removed also check the rubber drive coupling for wear. Lubricate the coupling with grease before reassembly.

D. Oil the fan motor with approximately five drops of light weight oil.

E. Replace side panels.

G. Re-connect power supply.

# Specifications

## **Dimensions**

Width	17" (42.9 cm)
Depth	17" (42.9 cm)
Height	58" (147.3 cm)

## **Shipping Weight**

220 lbs. (99 kg)

## **Capacity**

Ready to serve	6 gallons (22.7 liters)
Frozen reserve	3 gallons (11.3 liters)
Total capacity	9 gallons (34 liters)

## **Compressor**

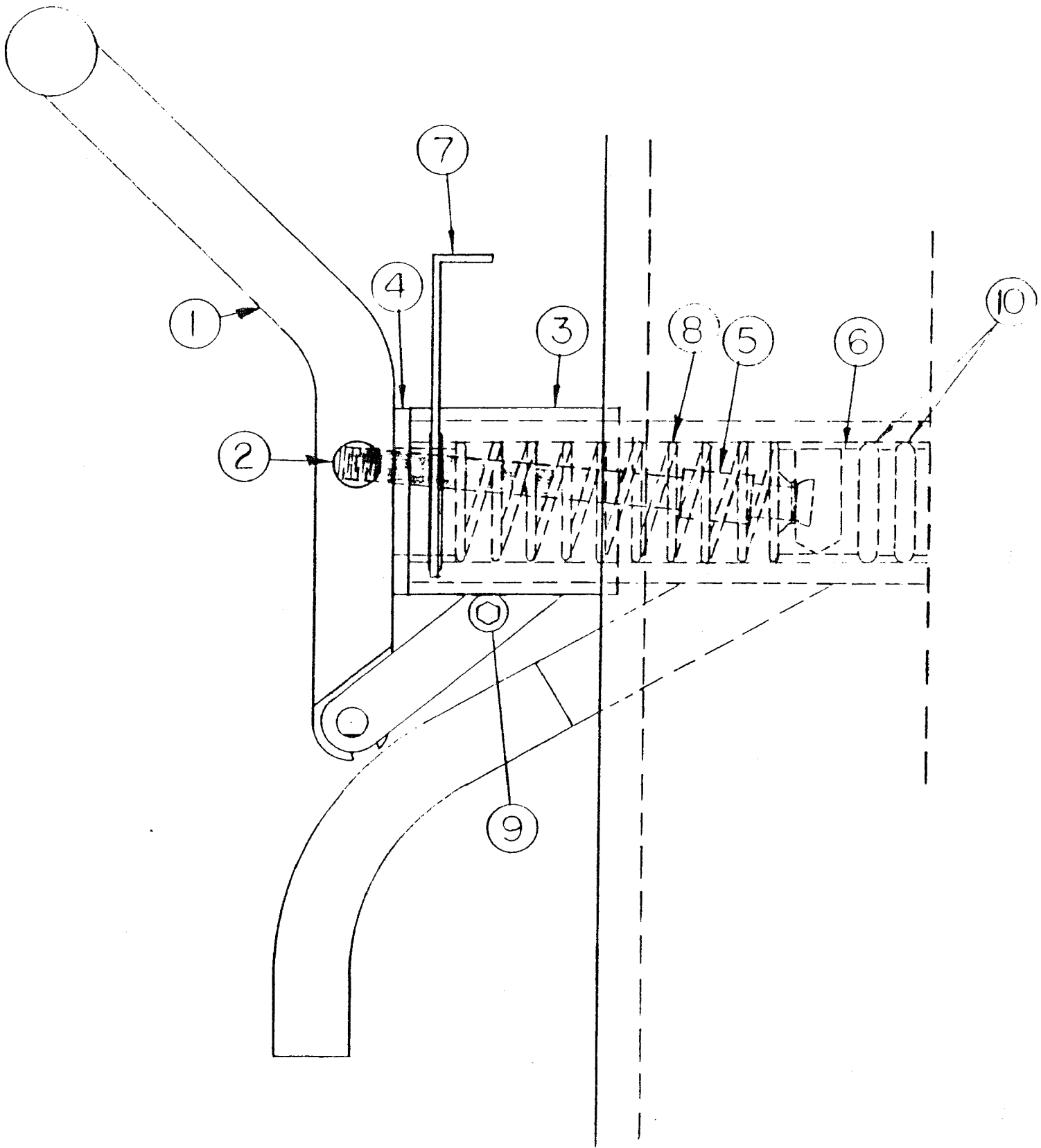
3/4 HP, 502 Refrigerant, 16 oz.  
Low side pressure - 25 to 28 psi\*  
High side pressure - 215 to 230 psi\*  
\* At 75°F (24C) ambient temperature

## **Electrical Requirements**

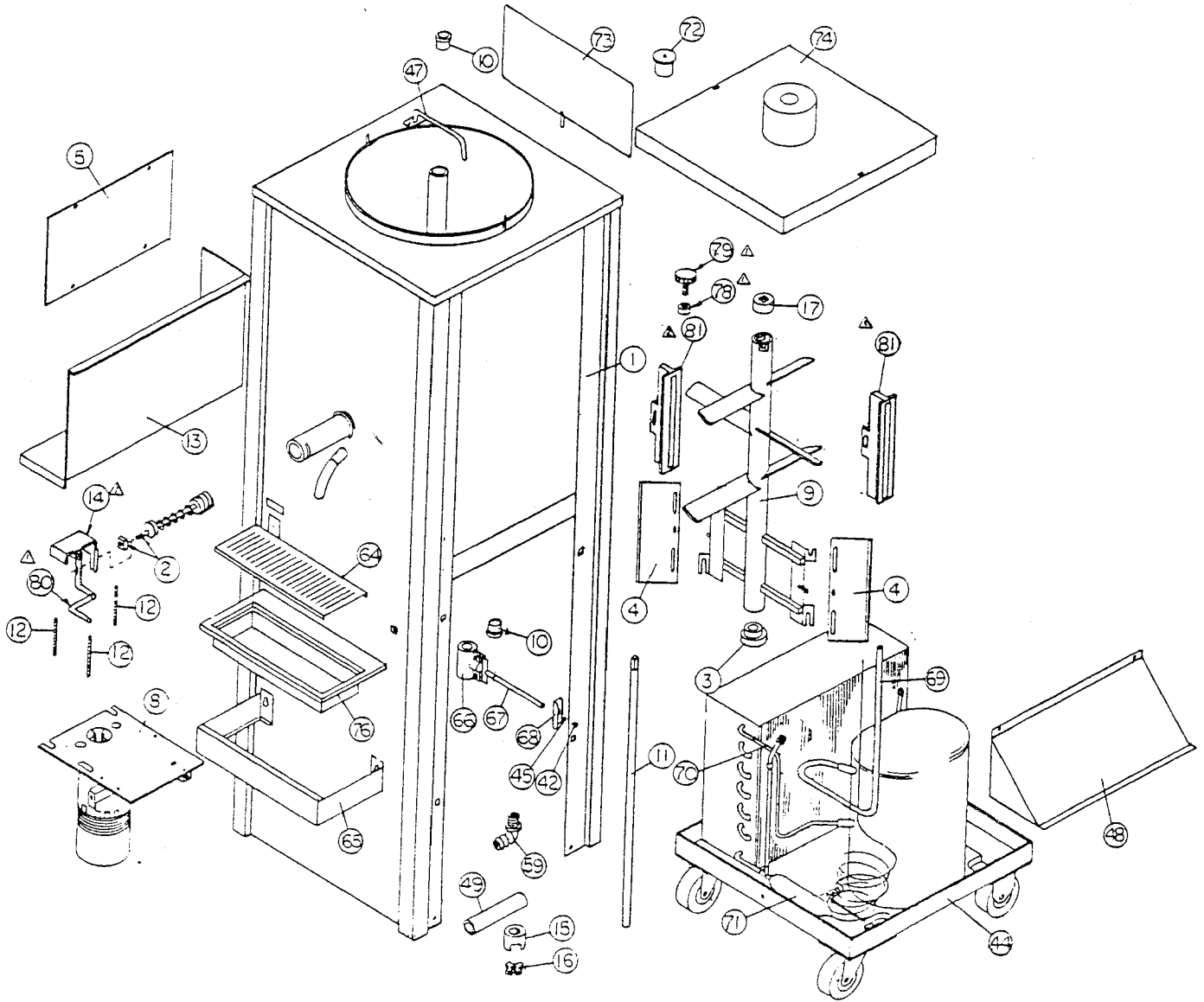
115 volt, 60 Hz, 1 phase  
Operating amp draw - 9.6 amps  
Use 20 amp circuit

**1621 VALVE RETROFIT**  
**ASSEMBLY PROCEDURE**

- STEP 1** Start with Item #2 (handle pivot) and insert into opening in Item #1 (dispensing handle). Set aside.
- STEP 2** Slide Item #4 (plunger retainer) over the threaded end of Item #5 (plunger rod). NOTE: Flanged end of plunger retainer must be against dispensing handle.
- STEP 3** Insert plunger rod and plunger retainer assembly through the obround slot in the dispensing handle and screw into the handle pivot.
- STEP 4** Install Item #8 (compression spring) over the plunger rod. Compress the spring against the plunger retainer and "snap" Item #6 (plunger) over the end of the plunger rod. Install "O" rings on plunger.
- STEP 5** Slide Item #3 (handle mount collar) over the product dispensing tube on the machine until the ends at the collar and dispensing tube are flush. Slide Item #7 (valve retainer clip) through the slots in the handle mount collar and product dispensing tube and tighten Item #9 (cap screw) until handle mount collar is tight on product dispensing tube. Remove valve retainer clip.
- STEP 6** Lube "O" rings and slide plunger into product dispensing tube. Slip the slot in the end of the handle over the round pin in the handle mount collar. Pull the handle down slowly and push the handle toward the front of the machine (at the same time) until the handle engages over the pin fully. Push the handle to the "closed" position. With the plunger retainer fully engaged into the product dispensing tube and slot positioned vertical, install the valve retainer clip. Open and close the valve several times to check for smooth operation.



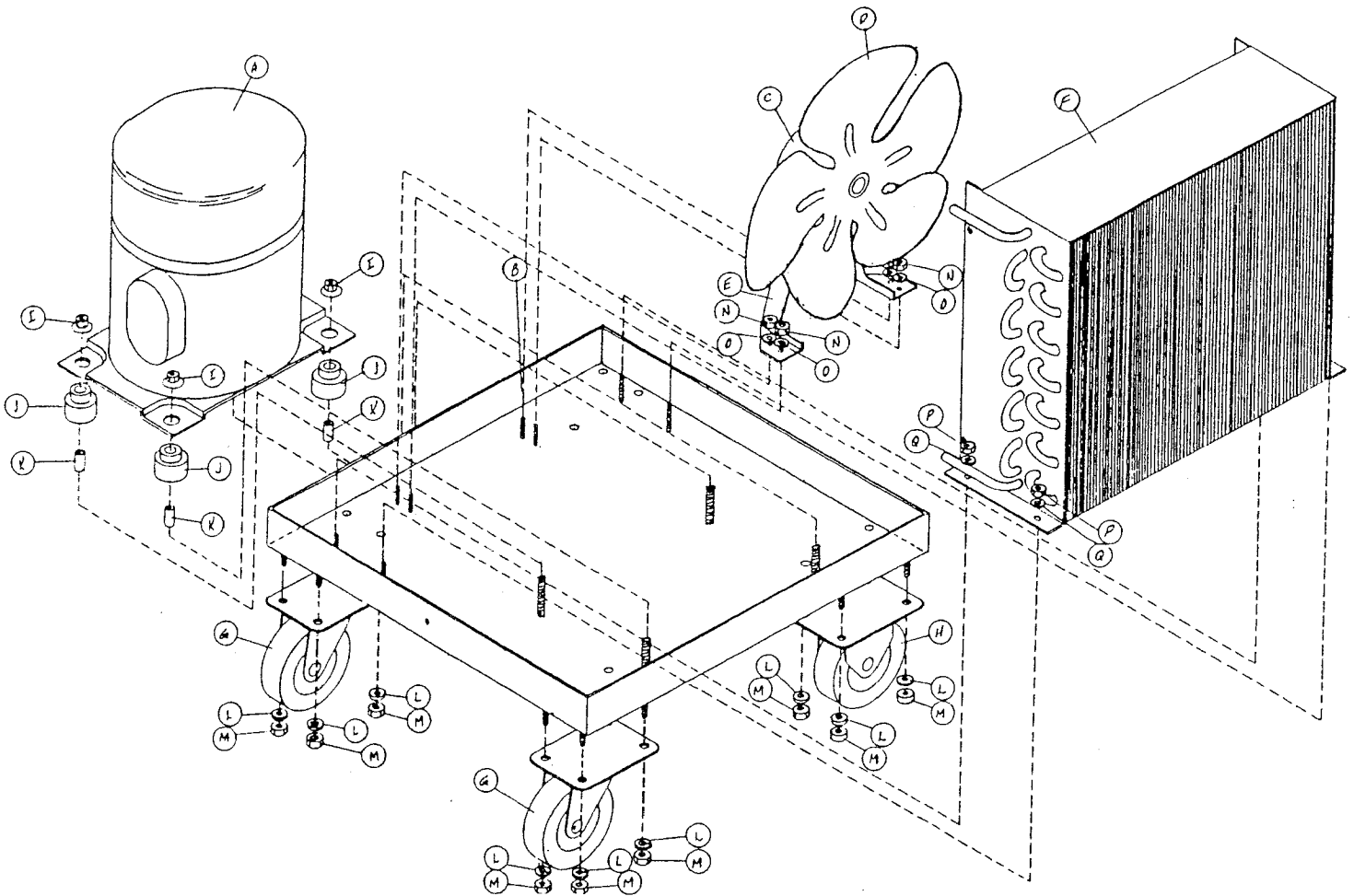
# W1621 EXPLODED VIEW DRAWING



# W1621 REPLACEMENT PARTS

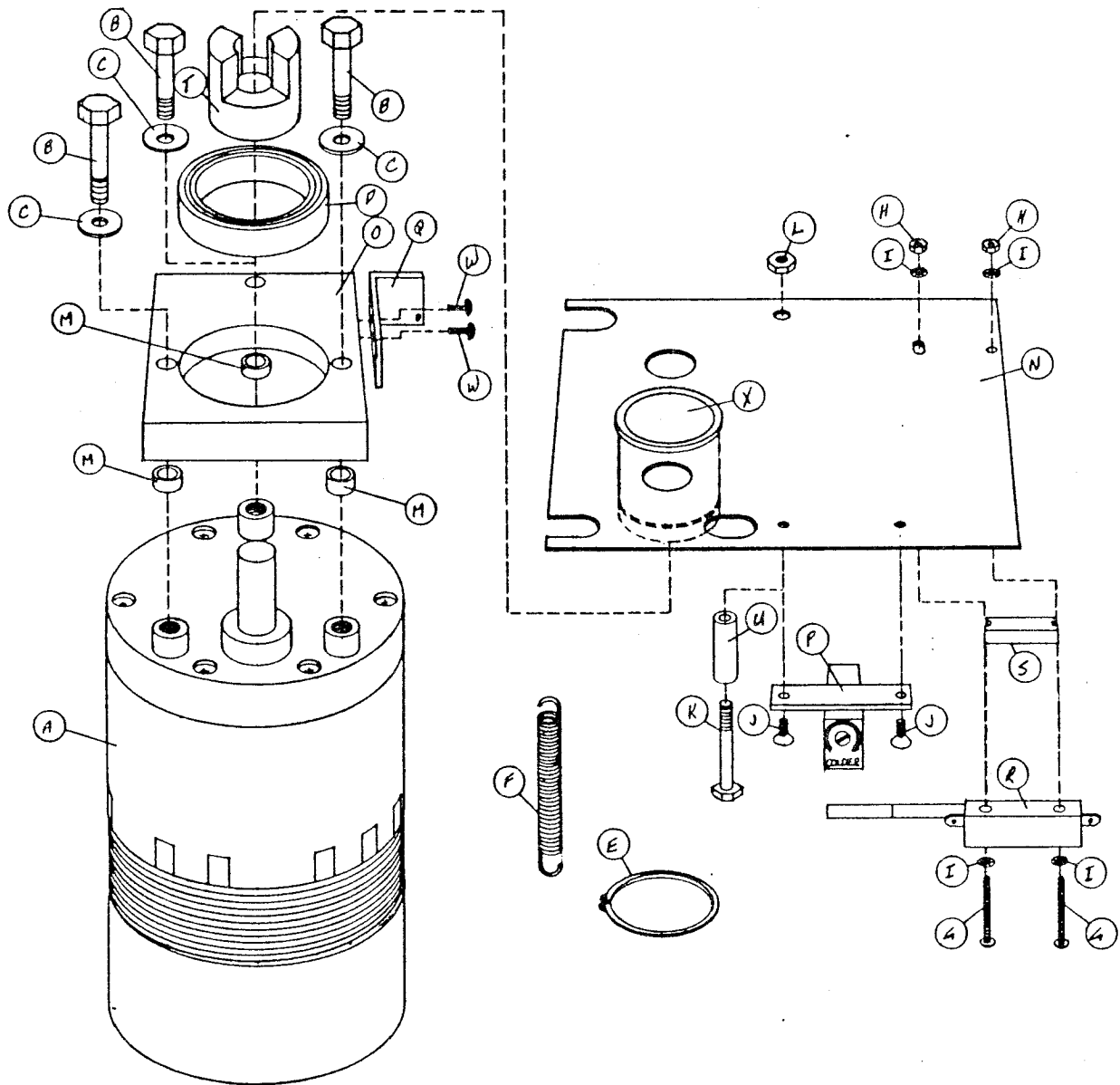
ITEM	QTY.	PART NO.	DESCRIPTION
1	1	N/A	FRAME/TANK ASSEMBLY
2	1	045.5015	PLUNGER ASSEMBLY
3	1	013.5014	BEARING AGITATOR (NYLON)
4	2	013.5023	AGITATOR SCRAPER BLADES
5	1	N/A	ELECTRICAL BOX COVER
6	1	052.5011	RIGHT SIDE PANEL (NOT SHOWN)
7	1	052.5012	LEFT SIDE PANEL (NOT SHOWN)
8	1	032.5002	GEAR MOTOR ASSEMBLY
9	1	N/A	AGITATOR WELDMENT
10	2	038.5000	FLANGE BEARING
11	1	N/A	DRIVE SHAFT
12	3	N/A	GEAR MOTOR STUD
13	1	N/A	ELECTRICAL BOX ASSEMBLY
14	1	048.5008	VALVE RETAINER CLIP ASSEMBLY
15	1	045.1046	L-070 COUPLING
16	1	045.1044	L-070 SPIDER
17	1	045.5005	AGITATOR DRIVE COUPLING
18	1	N/A	2740 HOLE PLUG (NOT SHOWN)
19	1	N/A	RUBBER GROMMET (NOT SHOWN)
20	1	N/A	BOLT, 8-32 X 3/4 S.S. (NOT SHOWN)
21	6	061.0264	10-24 X 1/4 TS HD PHIL. (NOT SHOWN)
22	2	061.0286	10-24 X 1/2 TS HD PHIL. (NOT SHOWN)
23	2	N/A	10-24 HEX NUT S.S. (NOT SHOWN)
24	2	N/A	5/16-18 HEX NUT S.S. (NOT SHOWN)
25	2	N/A	5/16 FLATWASHER S.S (NOT SHOWN)
26	1	N/A	TY-535M CABLE TIE (NOT SHOWN)
27	1	N/A	2704 HOLE PLUG (WHITE) (NOT SHOWN)
31	1	N/A	BUSHING, #12, .20 X .37 (NOT SHOWN)
32	1	047.0076	LUBRI-FILM SANITARY LUBRICANT
38	1	N/A	BUSHING, INSULATOR (NOT SHOWN)
39	1	157.0011	INDICATOR LIGHT, RED (12V) NOT SHOWN)

# W1621 BASE ASSEMBLY



ITEM	PART NO.	QTY.	DESCRIPTION
A	020.0107	1	COMPRESSOR
B	021.5011	1	FRAME BOTTOM PLATE
C	032.0209	1	FAN MOTOR
D	032.0286	1	FAN BLADE
E	020.0411	1	FAN BRACKET
F	020.0253	1	CONDENSER
G	063.0905	2	SWIVEL CASTER W/BRAKE
H	063.0906	2	RIGID CASTER
I	061.1082	4	COMPRESSOR FLANGE NUT
J	020.0413	4	COMPRESSOR RUBBER
K	020.0412	4	COMPRESSOR SPACER
L	061.1257	16	SPLIT LOCKWASHER
M	061.1086	16	5/16-18 HEX NUT Z.P.
N	061.1074	4	1/4-20 NUT
O	061.1246	4	1/4 WASHER
P	061.1055	4	10-24 NUT
Q	061.1224	4	WASHER

# W1621 GEAR MOTOR ASSEMBLY



PART #	DESCRIPTION
A	032.0103 Gear Motor
B	061.0580 1/4-20 Cap Screw
C	061.1242 1/4 Flat Washer
D	038.0401 Bearing
E	061.1305 Retaining Ring
F	063.1209 Extension Spring
G	061.0058 6-32 Screw
H	061.1037 6-32 Hex Nut
I	061.1203 #6 Lockwasher

PART #	DESCRIPTION
J	061.0345 10-32 X 1/4 Screw
K	061.0592 1/4-20 X 2" Bolt
L	061.1074 1/4-20 Hex Nut
M	2.5003 Spacer
N	032.5004 Swivel & Klick Switch Plate
O	032.5007 Pivot Block
P	017.5000 Consistency Control
Q	017.5006 Spring Bracket

PART #	DESCRIPTION
R	057.5003 Motor Klickswitch
S	057.3037 Insulator
T	045.1045 L070 Coupling-5/8
U	064.1026 Motor Stop Sleeve
V	032.0197 High Speed Gear
X	032.5006 Klickswitch Tube

# W1621 REPLACEMENT PARTS

(Continued)

ITEM	QTY.	PART NO.	DESCRIPTION
40	14	061.1002	NYLON SCREW ANCHOR, #8 SCREW (NOT SHOWN)
41	14	061.0127	#8 X 3/4 TYPE "A" S.S. (NOT SHOWN)
42	1	061.0264	10-24 X 1/4 TH. M/S S.S.
43	1	N/A	SWITCH DECAL (NOT SHOWN)
44	1	N/A	BASE ASSEMBLY
45	1	N/A	#10 INTERNAL TOOTH LOCKWASHER
46	1	N/A	INSULATION (NOT SHOWN)
47	1	157.1018	LEVEL INDICATOR ASSEMBLY
48	1	N/A	AIR DEFLECTOR
49	1	N/A	DRAIN TUBE HOSE
50	1	N/A	FUSE SPECIFICATION DECAL (NOT SHOWN)
51	4	N/A	#8 X 3/8 PAN HD PHIL. (NOT SHOWN)
52	1	N/A	ACCESS VALVE INSULATION (NOT SHOWN)
53	2	N/A	#8 FLAT WASHER (NOT SHOWN)
54	1	N/A	WASHER, .05 X .25 X .187 (NOT SHOWN)
55	2	N/A	LOCKWASHER, #8 INTERNAL (NOT SHOWN)
56	2	N/A	NUT, 8-32, HEX (NOT SHOWN)
57	1	N/A	LOCKNUT, 8-32, HEX FIBER PLATED (NOT SHOWN)
58	1	N/A	SCREW, 8-32 X 5/8, S.S. (NOT SHOWN)
59	1	N/A	1/2" MPT X 5/8" BARB-ELBOW
60	2	N/A	10-24 ELASTIC LOCKNUT (NOT SHOWN)
61	2	N/A	10-24 X 3/4 RH SLTD. (NOT SHOWN)
62	1	047.0022	#811-24 3/8" PIPE BRUSH (NOT SHOWN)
63	1	052.5013	REAR PANEL (NOT SHOWN)
64	1	047.1081	INSERT DRIP PAN
65	1	047.1026	DRIP PAN FORM
66	1	N/A	VALVE MODIFICATION
67	1	N/A	VALVE EXTENSION ASSEMBLY
68	1	N/A	VALVE HANDLE
69	1	N/A	SUCTION LINE
70	1	N/A	CONDENSER LINE
71	1	N/A	FILTER DRYER ASSEMBLY
72	1	047.5001	SIGN SUPPORT

# W1621 REPLACEMENT PARTS

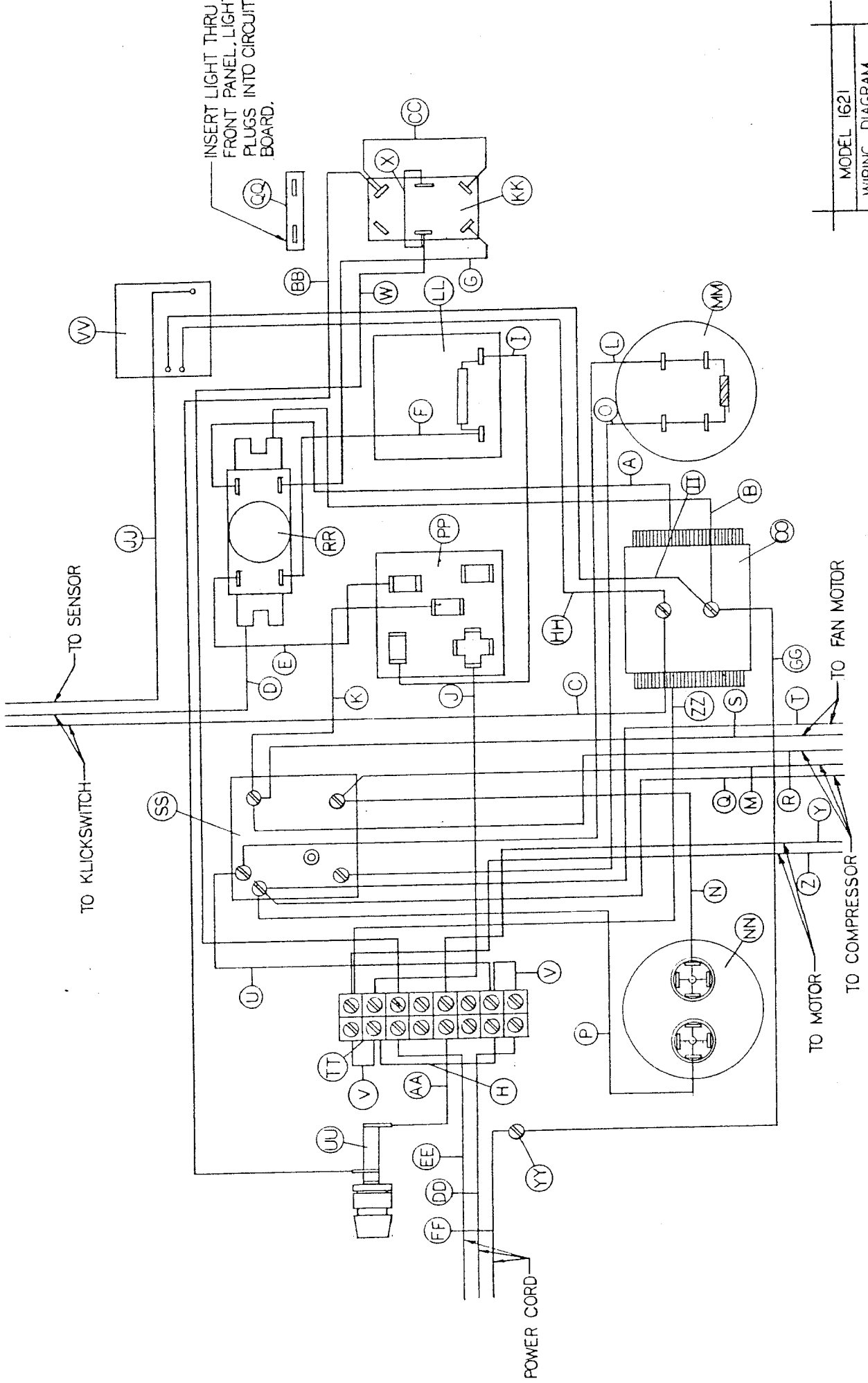
(Continued)

ITEM	QTY.	PART NO.	DESCRIPTION
73	1	047.3017	SIGN ASSEMBLY
74	1	047.5000	TOP COVER MODIFIED
75	2	N/A	CONDENSER PAD (NOT SHOWN)
76	1	047.2017	DRIP TRAY
77	9	N/A	5/16-18 LOCKNUT (NOT SHOWN)
78	1	N/A	SPACER AGITATOR
79	1	N/A	KNOB ASSEMBLY
80	1	048.5013	HANDLE ASSEMBLY
81	2	013.5031	BLADE STABILIZER

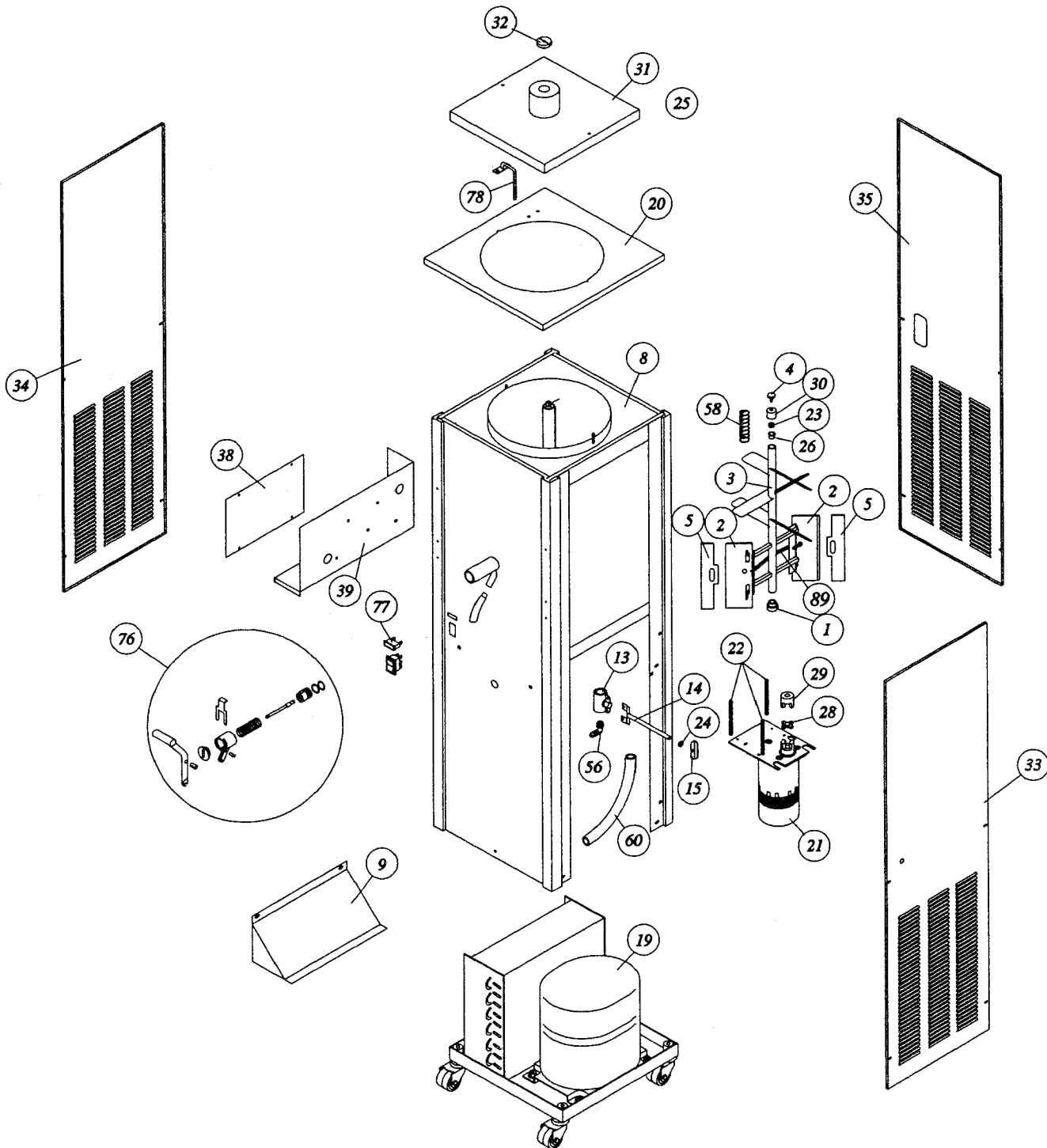
# ELECTRICAL BOX ASSEMBLY

## MODEL W1621 & 215

A.....	Black Wire	Z.....	Black Wire
B.....	Yellow Wire	AA.....	Orange Wire
C.....	Yellow Wire	BB.....	Orange Wire
D.....	Yellow Wire	CC.....	Orange Wire
E.....	Black Wire	DD.....	White Wire
F.....	Red Wire	EE.....	Black Wire
G.....	Red Wire	FF.....	Green Wire
H.....	White Wire	GG.....	Green Wire
I.....	White Wire	HH.....	To Circuit Board
J.....	White Wire	II.....	To Circuit Board
K.....	Black Wire	JJ.....	To Sensor
L.....	Red Wire	KK.....	057.0913 Switch
M.....	Yellow Wire	LL.....	057.0668 Timer
N.....	Yellow Wire	MM.....	057.0603 Start Capacitor
O.....	Red Wire	NN.....	057.0604 Run Capacitor
P.....	Red Wire	OO.....	057.2032 Transformer
Q.....	Red Wire	PP.....	057.0633 Relay
R.....	Black Wire	QQ.....	157.0011 Mix Low Light
S.....	Black Wire	RR.....	057.0651 Sequencer
T.....	Black Wire	SS.....	057.0638 Compressor Relay
U.....	White Wire	TT.....	057.0248 Barrier Strip
V.....	White Wire	UU.....	057.0815 Fuse Holder
W.....	Black Wire	VV.....	Circuit Board
X.....	Black Wire	YY.....	Ground Connection
Y.....	Black Wire	ZZ.....	White Wire

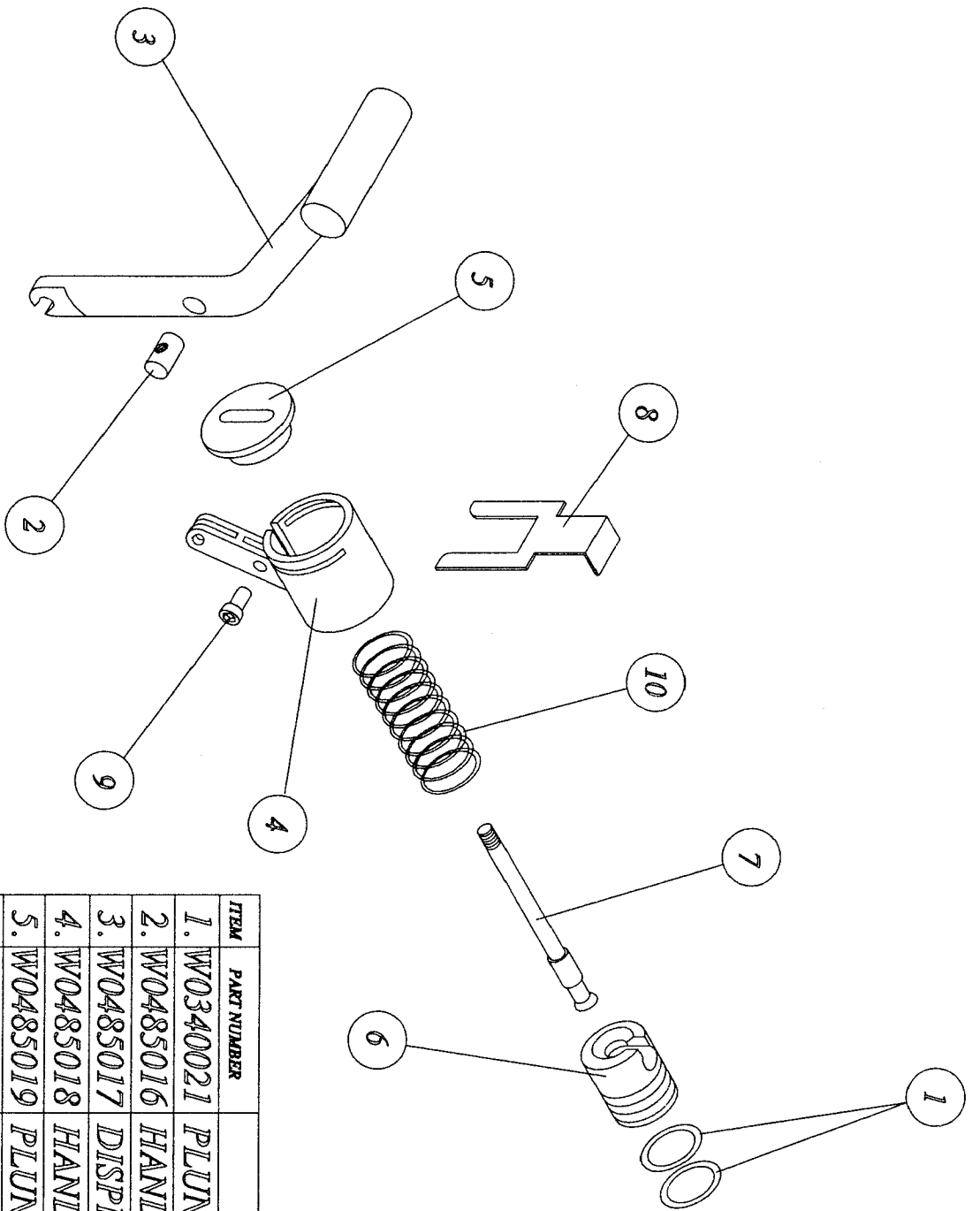


MODEL 1621
WIRING DIAGRAM
P/N 75062
PAGE 1 OF 4



MODEL 1621

ITEM	PART NUMBER	DESCRIPTION	QTY.	ITEM	PART NUMBER	DESCRIPTION	QTY.
1	W0135014	AGITATOR BEARING	1	46	W0610264	10-24 X 1/4 TRUSS HD. PHIL.	8
2	W0135023	AGITATOR SCRAPER BLADES	2	47	W0610286	10-24 X 1/2 TRUSS HD. PHIL.	9
3	W0135023	AGITATOR ASSEMBLY	1	48	W0610294	10-24 X 3/4 HEX HD. CAP	2
4	W0135030	KNOB ASSEMBLY	1	49	W0611002	NYLON SCREW ANCHOR	14
5	W0135032	SCRAPER BLADE STABILIZER	2	50	W0611053	10-24 LOCK NUT	10
6	W0200013	REFRIGERANT 404A	1.25	51	W0611054	10-24 HEX NUT	2
7	W0205019	INSULATION	1	52	W0611082	5/16-18 FLANGE NUT	9
8	W0205029	FRAME/TANK ASSEMBLY	1	53	W0611213	#8 FLAT WASHER	2
9	W0205031	AIR DEFLECTOR	1	54	W0611224	#8 LOCKWASHER	1
10	W0205033	SUCTION LINE	1	55	W0611252	5/16-18 FLAT WASHER	2
11	W0205034	CONDENSER LINE	1	56	W0620230	1/2 MPT X 5/8 BARB FITTING	1
12	W0205036	FILTER DRYER ASSEMBLY	1	57	W0630802	CABLE TIE	1
13	W0205065	VALVE MODIFICATION	1	58	W0631231	COMPRESSION SPRING	1
14	W0205066	VALVE EXTENSION ASSEMBLY	1	59	W0631802	CUP, MEASURING	1
15	W0205067	VALVE HANDLE	1	60	W0641028	DRAIN TUBE HOSE	1
16	W0205068	ACCESS VALVE INSULATION	1	61	W0650501	ACCESS VALVE	1
17	W0205070	NIPPLE INSULATION	1	62	W0660058	PLASTIC BAG	1
18	W0210062	CONDENSER PAD	2	63	W0670008	RUBBER STRIP, TRIMLOK	6 FT
19	W0215018	BASE ASSEMBLY	1	64	W0671010	SOUND INSULATION	2
20	W0215022	MACHINE TOP PLATE	1	65	W0800029	ONE SLOT DIVIDER	2
21	W0325002	GEAR MOTOR ASSEMBLY	1	66	W0800033	BOTTLE BDX	1
22	W0325008	STUD, 5/16-18 X 3	3	67	W0800034	SCORED PAD	1
23	W0340057	V-RING SEAL	1	68	W0800040	TWO SLOT DIVIDER	1
24	W0340110	RUBBER GROMMET	1	69	W0800064	INTERLOCK CONTAINER	1
25	W0375000	DRIVE SHAFT	1	70	W0800065	INTERLOCK CONTAINER CAP	2
26	W0385000	FLANGE BEARING	1	71	W0800066	ACCESSORIES BDX	1
27	W0385001	SHAFT BEARING	1	72	W0800090	1621 TOP COLLAR	1
28	W0451044	L-070 RUBBER SPIDER	1	73	W0800109	1621 BASE PAD	1
29	W0451046	L-070 COUPLING	1	74	W0800110	1621 BACK L BLOCK	2
30	W0455005	AGITATOR DRIVE COUPLING	1	75	W0800111	1621 FRONT L BLOCK	2
31	W0475000	TOP COVER MODIFIED	1	76	W0890127	1621 VALVE ASSY. KIT	1
32	W0475001	SIGN SUPPORT	1	77	W1570011	INDICATOR LIGHT, RED	1
33	W0525011	R.H. SIDE PANEL	1	78	W1571018	LEVEL CONTROL PROBE ASSY.	1
34	W0525012	L.H. SIDE PANEL	1	79	W1571060	LEVEL CONTROL INSULATOR	1
35	W0525013	REAR PANEL	1	80	W1571077	LOW LEVEL IND. CONTROL	1
36	W0570207	TERMINAL, FASTON	2	81	W1610022	8-32 X 3/4 HEX HD SCREW	1
37	W0570208	TERMINAL	2	82	W1610023	8-32 X 5/8 SCREW	1
38	W0575007	LID	1	83	W1611008	8-32 NUT	2
39	W0575062	ELECTRICAL BDX ASSEMBLY	1	84	W1611010	8-32 LOCKNUT	1
40	W0600027	SWITCH DECAL	1	85	W1611207	#8 LOCKWASHER	2
41	W0600029	MOTOR SERIAL PLATE	1	86	W1611211	WASHER	1
42	W0600218	CAUTION LABEL	3	87	W1630005	BUSHING	1
43	W0600209	CAUTION DECAL	1	88	W1630007	BUSHING	1
44	W0610110	8-32 X 3/8 PAN HD. PHILLIPS	4	89	W0631241	SCRAPER BLADE SPRING	1
45	W0610127	#8 X 3/4 TRUSS HD. PHIL.	14	90			



ITEM	PART NUMBER	DESCRIPTION
1.	W0340021	PLUNGER O-RINGS
2.	W0485016	HANDLE PIVOT
3.	W0485017	DISPENSING HANDLE
4.	W0485018	HANDLE MOUNT COLLAR
5.	W0485019	PLUNGER RETAINER
6.	W0485020	VALVE PLUNGER
7.	W0485021	VALVE PLUNGER ROD
8.	W0486005	VALVE RETAINER CLIP
9.	W0610531	SOCKET HEAD CAP SCREW
10.	W0631233	COMPRESSION SPRING

## Warranty

Wilch Manufacturing, Inc., hereinafter referred to as the COMPANY, warrants new slush freezers, cocktail freezers and ice machines manufactured by the COMPANY to be free from defects in material and workmanship under normal use and service for a period of one year from date of original installation, and four additional years on the compressor. The obligation of the COMPANY under this warranty is limited to the repair or replacement, of parts or assemblies that in the COMPANY's opinion are defective, F.O.B. the factory, or at such other location that the COMPANY may designate.

The foregoing warranty shall not apply to (1) any part or assembly that has been altered, modified, or changed (2) any part or assembly that has been subject to misuse, abuse, neglect or accidents or (3) any machine that has been installed and/or maintained inconsistent with the COMPANY's technical publications.

The five year compressor warranty shall not apply when the machine's refrigeration system is modified with a condenser, parts and assemblies other than those manufactured by the COMPANY, unless the COMPANY approves these modifications for specific installations in writing.

**THE FOREGOING WARRANTY IS EXCLUSIVE AND IN LIEU OF ALL OTHER WARRANTIES WHETHER WRITTEN, ORAL OR IMPLIED, INCLUDING ANY WARRANTY OF MERCHANTABILITY OR FITNESS FOR PURPOSE.** The Liability of the COMPANY arising out of the sale, use or operation of the COMPANY's parts and equipment, whether in warranty, contract, negligence or strict liability including claims for special indirect or consequential damages shall not in any event exceed the cost of furnishing a replacement for a defective part or assembly as hereinabove provided. Upon the expiration of the warranty period, as hereinabove provided, any such liability shall terminate. The foregoing warranty shall constitute the sole and exclusive liability of the COMPANY.

To secure prompt and continuing warranty service, the warranty registration card must be completed and sent to the COMPANY within five (5) days from the installation date.

Distributor/Dealer \_\_\_\_\_  
Model Number \_\_\_\_\_ Serial Number \_\_\_\_\_  
Installation Date \_\_\_\_\_

**Wilch** MANUFACTURING INC.

P.O. Box 179, Topeka, KS 66601 • Office: 1345 S.W. 42nd Street, Topeka, KS 66609 • Phone: (913) 267-2762